



World Food Programme



# Building bodies of impact evaluation evidence

gLOCAL Evaluation Week

*WFP Office of Evaluation*

June 2020

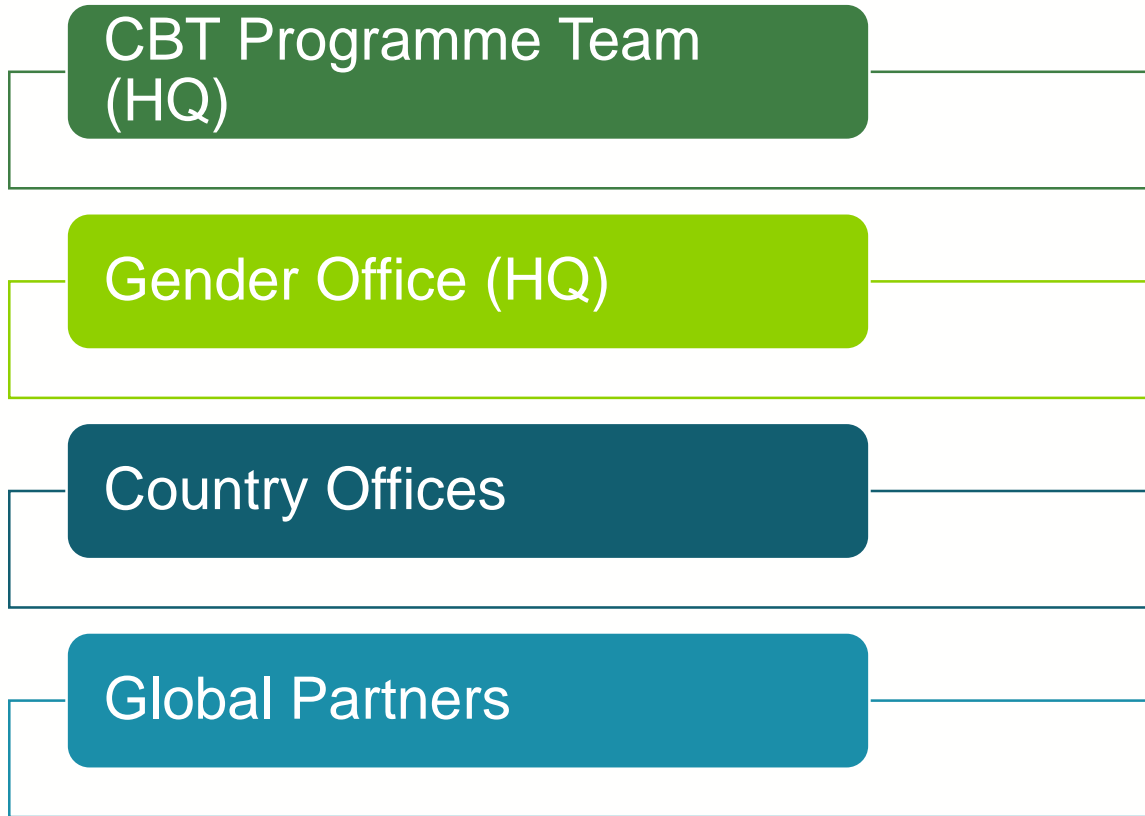
SAVING  
LIVES  
CHANGING  
LIVES

# Impact Evaluation Windows:

- Coordinated portfolios of impact evaluations managed by OEV;
- Developed in partnership with WFP programme teams;
- Stimulate demand for impact evaluations in priority areas;
- Co-funded with participating country offices.



# Cash-based Transfers and Gender Window: *The Demand for Evidence*



**The potential of cash-based interventions to promote gender equality and women's empowerment**

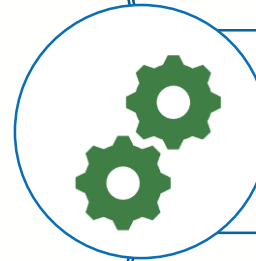
A multi-country study

# CBT and Gender Window: Questions & Measurement

- Inequalities
- Agency
- Norms/Attitudes



**To what extent** do CBTs contribute to, or compromise, progress towards gender equality outcomes or the empowerment of women and girls? Under what conditions?



**How do programme design features** mediate or mitigate the impact of CBTs on gender equality outcomes?



**How does targeting women** for transfers affect the impact of CBTs on outcomes such as food expenditure/human capital development, nutrition, etc?



# Selection for Window

## Emerging Impact Evaluation Clusters and Common Threads

Country	Common Threads				Emergency Level *	Potential for multi-year IE
	Overall Impact	Recipient	Community	Conditional		
<b>Afghanistan</b>	✓		✓			✓
<b>Burundi</b>	✓		✓	✓		
<b>Bangladesh</b>	✓		unsure		L2**	
<b>El Salvador</b>	✓	✓	✓	✓	M	✓
<b>Guinea</b>	✓					✓
<b>Kenya</b>	✓		✓	✓		
<b>Syria</b>	✓	✓	unsure	unsure	L3	✓
<b>Turkey</b>	✓	✓		✓	L3	

\* L3: Highest emergency level

L2: 2nd highest emergency level

M: Being monitored

\*\* focus on host community only

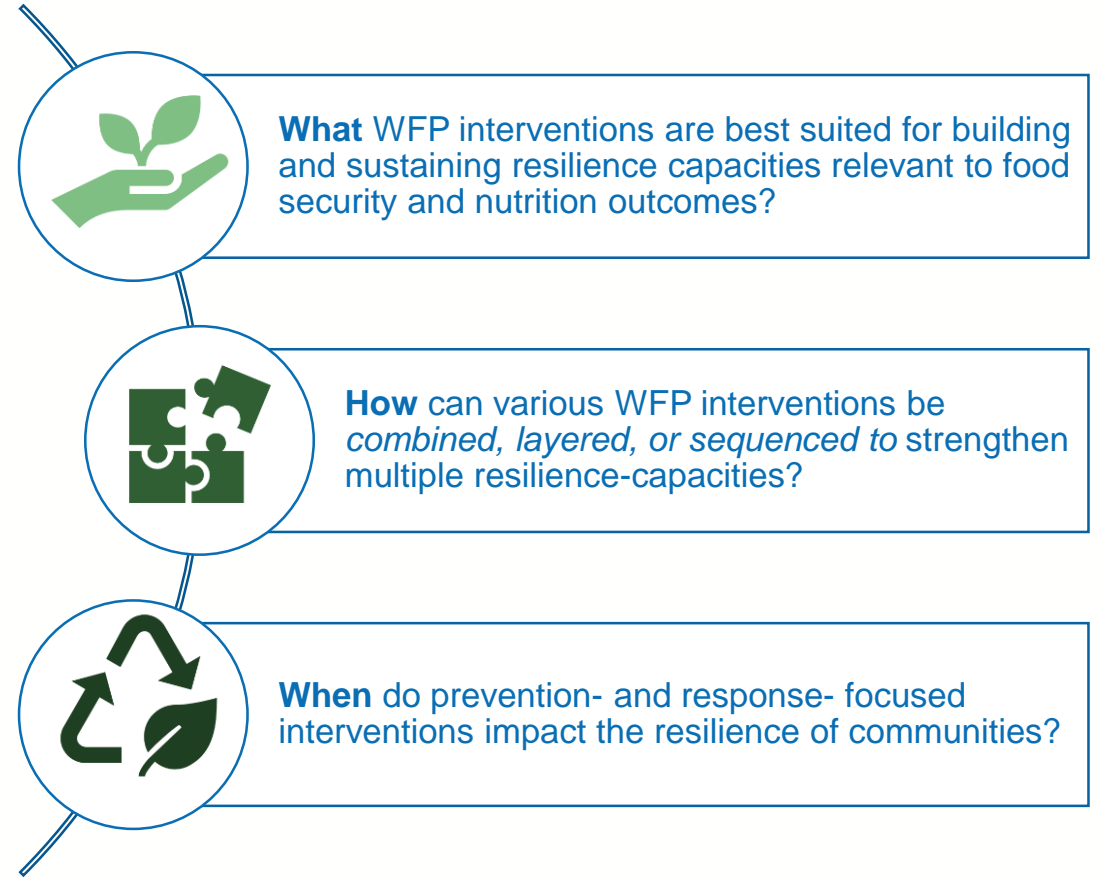
# Climate and Resilience Window

- Interest at the corporate level to develop a consolidated approach to resilience, and develop an analytical framework for resilience
- Opportunity to draw from and inform corporate efforts to develop an integrated approach
- The window benefits from and contributes to technical consultation to revisit and further elaborate definition of resilience



# Climate and Resilience Window

- 13 country offices expressed interest to be part of the window
- 8 COs invited to the window workshop
- Planning for revisiting the initial programme plans and reassessing feasibility for IE



# Overview of resilience programming

Country	FFA	Post-harvest Loss	Climate Insurance	Saving Capacity	SAMS	Forecast-based financing
Bangladesh	✓		✓			✓
Guatemala	✓		✓	✓		
Rwanda	✓	✓		✓	✓	
Senegal	✓	✓	✓	✓		
Sudan	✓	✓			✓	
Uganda		✓		✓	✓	
Dominican Republic			✓		✓	✓
Philippines						✓





[www.wfp.org/independent-evaluation](http://www.wfp.org/independent-evaluation)



[wfp.evaluation@wfp.org](mailto:wfp.evaluation@wfp.org)



via Giulio Cesare Viola 68, Rome - Italy



# Thank you!

World Food  
Programme