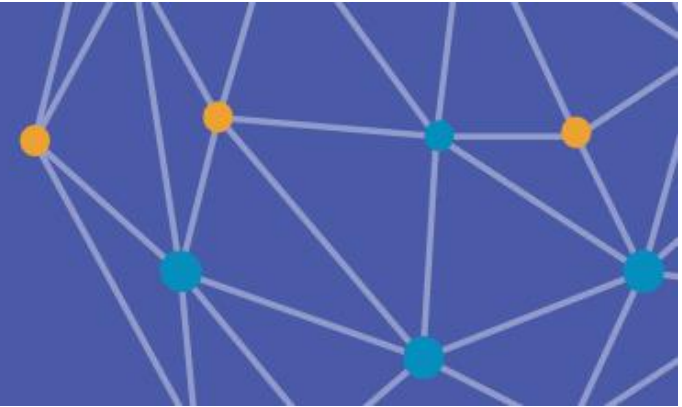




gLOCAL
EVALUATION WEEK
2021

MAY 31 – JUNE 4

Sharing local and global
M&E knowledge



Highlights from the rapid assessment of needs of migrant people in México

Nayeli Almanza – nalmanza@ra.org

Sustainable Landscapes Specialist, Rainforest Alliance Mexico

June 2nd, 2021



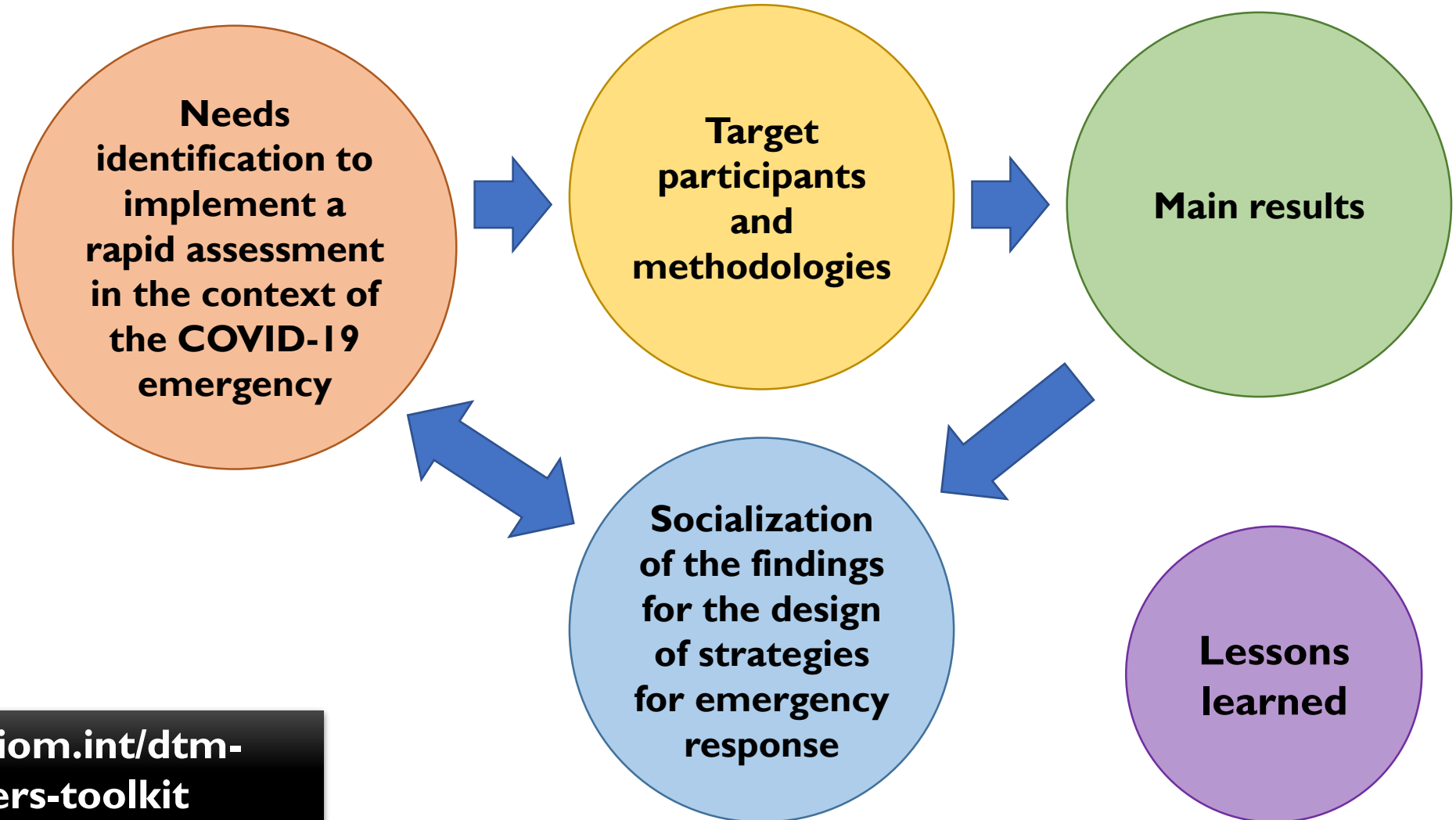
DTM

IOM • OIM

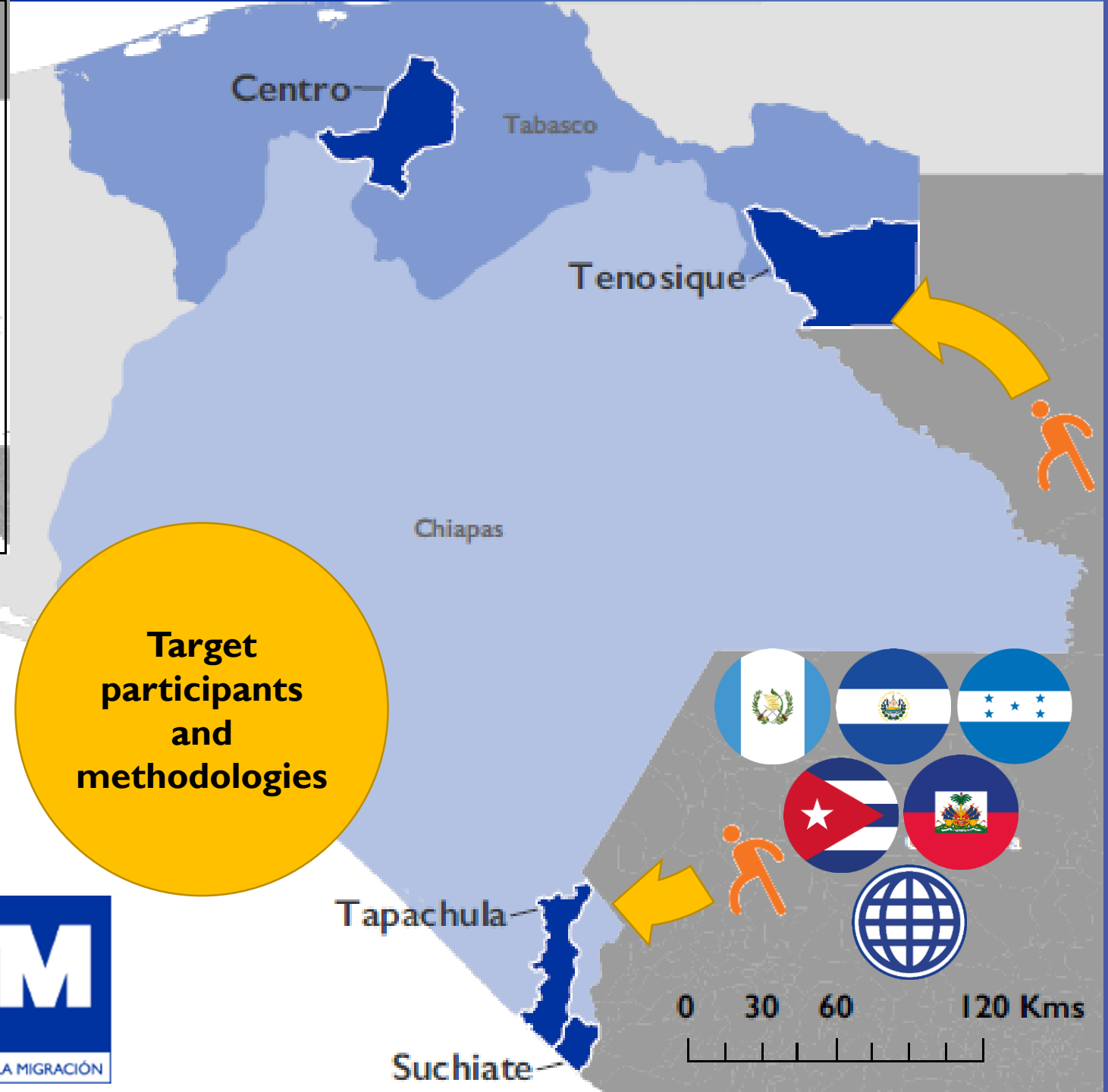
ORGANISMO DE LAS NACIONES UNIDAS PARA LA MIGRACIÓN

Displacement Tracking Matrix

DTM COVID-19 in the South border of Mexico



<https://displacement.iom.int/dtm-toolkit/dtm-partners-toolkit>

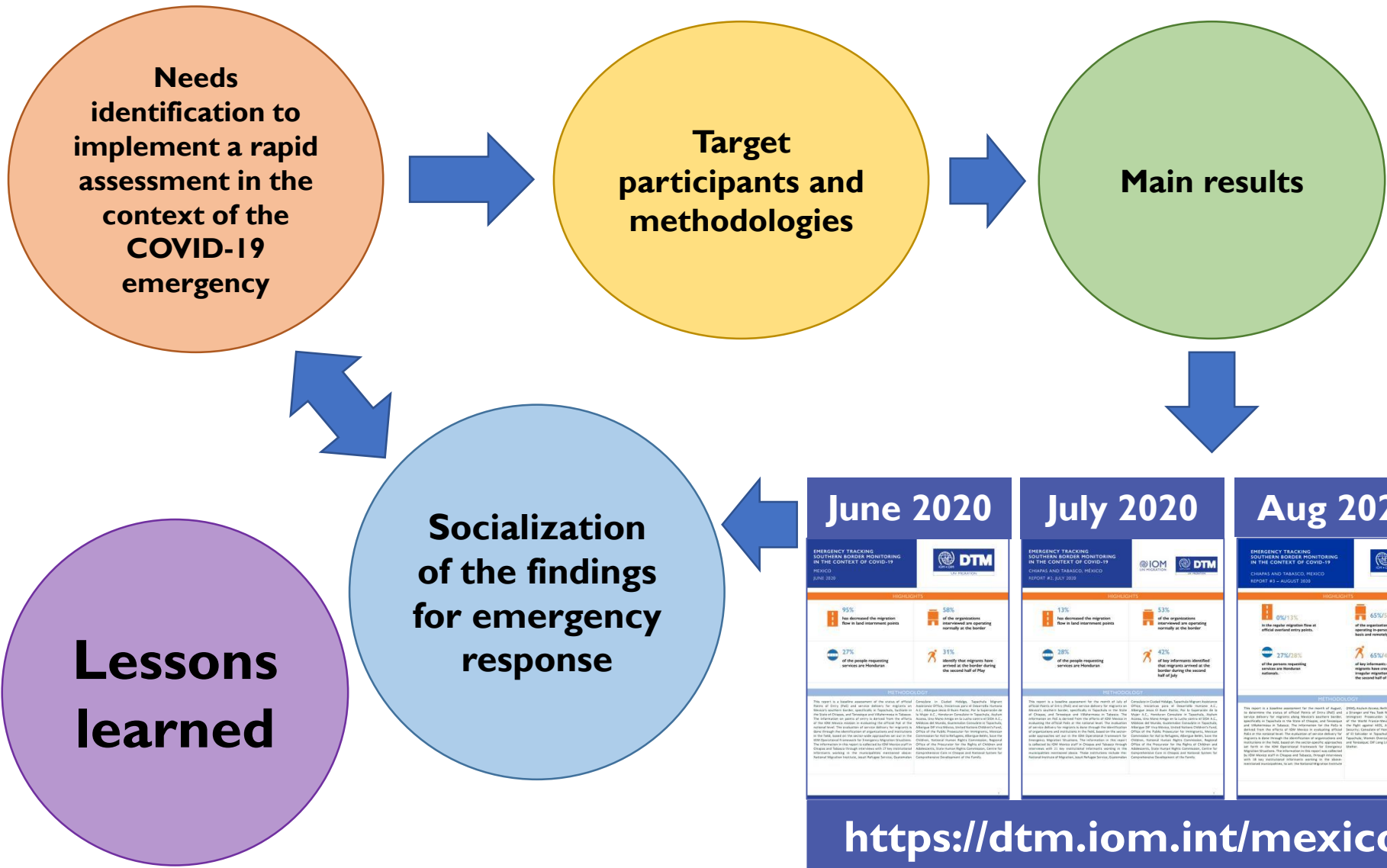


Fuente: ESRI y UN World Map
Este mapa es sólo para fines ilustrativos. Los nombres así como las denominaciones utilizadas en este mapa no son oficiales por parte de la Organización Internacional para las Migraciones.



Displacement Tracking Matrix

DTM COVID-19 in the South border of Mexico



June 2020	July 2020	Aug 2020
<p>EMERGENCY TRACKING SOUTHERN BORDER MONITORING IN THE CONTEXT OF COVID-19 MEXICO REPORT #1 - JUNE 2020</p> <p>HIGHLIGHTS</p> <ul style="list-style-type: none"> 95% of the migration flow in land movement points 58% of the organizations interviewed are operating normally at the border 27% of the people requesting services are Honduran 31% identify that migrants have arrived at the border during the second half of July 	<p>EMERGENCY TRACKING SOUTHERN BORDER MONITORING IN THE CONTEXT OF COVID-19 CHIHUAHUA AND TABASCO, MEXICO REPORT #2 - JULY 2020</p> <p>HIGHLIGHTS</p> <ul style="list-style-type: none"> 13% of the migration flow in land movement points 53% of the organizations interviewed are operating normally at the border 28% of the people requesting services are Honduran 42% of key informants identified that migrants arrived at the border during the second half of July 	<p>EMERGENCY TRACKING SOUTHERN BORDER MONITORING IN THE CONTEXT OF COVID-19 CHIHUAHUA AND TABASCO, MEXICO REPORT #3 - AUGUST 2020</p> <p>HIGHLIGHTS</p> <ul style="list-style-type: none"> 0%/0% in the regular migration flow at official movement entry points 65%/33% of the organizations consulted are continuing to operate as a border base and normally 37%/20% of the people requesting services are Honduran 65%/33% of key informants consider that migrants have returned to the border with regular migration status during the second half of August



 PROGRAMA REGIONAL SOBRE
MIGRACIÓN
MESOAMÉRICA Y EL CARIBE

www.programamesocaribe.iom.int

